

Custom Bath Vanities



mosaic 
Products. Design. Solutions.

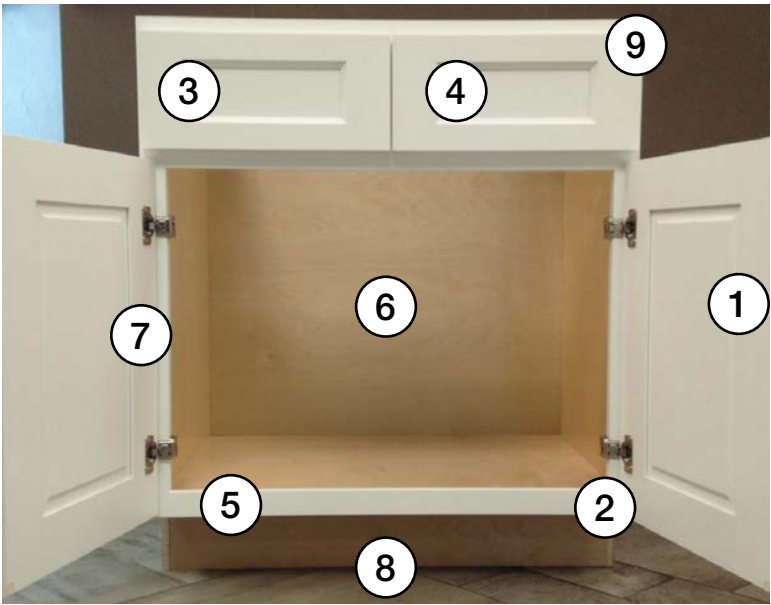
The Premier Series

With the highest quality materials and finest attention to detail, our wide selection of Premier Series doors offers distinctive touches and superb craftsmanship.

- Full overlay doors
- Soft close hinges & slides
- 5/8” solid wood dovetail drawers
- High grade finish



- 1 Solid wood door frames – either doweled and glued or mortise and tenon, depending on the door
- 2 6-way adjustable concealed hinge
- 3 5/8” solid birch dovetail drawer with under mount soft close sides
- 4 Inside drawer height is 2-1/2”

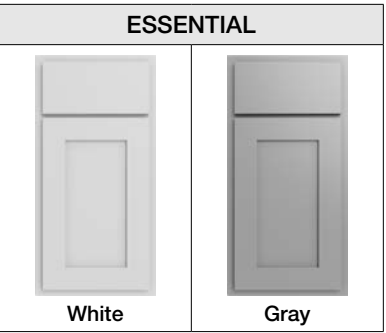


- 5 3/4” x 1-1/2” solid wood face frame
- 6 Back panel is 5 piece picture frame 3/4” thick
- 7 1/2” select birch veneered plywood side panels dovetailed into face frame
- 8 3/4” x 4-1/2” solid wood toe kick finished to match
- 9 I-Beam construction – Wood beam is riveted into the box frame for additional support

The Essential Series

Transform any space with our stunning partial overlay cabinets that satisfy both traditional and modern design palettes. This versatile look fits any lifestyle, at an attractive price point.

- Solid wood drawers
- Soft close door hinges
- Particle board cabinet box with plywood back
- High grade finish



Series Comparison: Premier vs. Essential

	Premier Series (Shaker, Brooklyn, Oslo)	Essential Series
Cabinet Box	1/2", 7-Ply, Plywood	1/2" Particle Board with Plywood Back
Drawer Box	5/8" Solid Wood, Dovetailed	5/8" Solid Wood, Dovetailed
Drawer Slides	Undermount, Full Extension, Metal, Soft Close with Ball Bearings	Undermount (not soft close)
Wood Species	Birch (Brooklyn, Shaker, Oslo White); White Oak (Oslo Oak)	MDF Door and Drawers
Door Hinge	6 Way Adjustable, Soft Close	Soft Close
Shelves	Adjustable, 3/4" Plywood	Adjustable, 3/4" Particleboard
Base Corner Reinforcement	3" Plywood Blocks or Stretchers	3" Plywood Blocks or Stretchers
Face Frame	1-1/2" Rails and Stiles, Solid Wood	Rubber Wood with Interlocking joints
Door / Drawer Head	Full Overlay Door Shaker: 5-Piece with Solid Center Panel; 2-3/4" or 3-1/2" Stiles and Rails Brooklyn: 5- Piece with Solid Center Panel; 3" Stiles and Rails	Partial Overlay MDF; 5-Piece HDF Door Rails and Stiles with MDF center panel; 2-3/4" Stiles and Rails
Approvals	KCMA certified, CARB II, TSCA VI, and E1 certified	KCMA certified, CARB II, TSCA VI, and E1 certified
Assembly	Glue and Staples, No Cams or Brackets	Glue and Staples, No Cams or Brackets
Interior Finish	Natural	Natural
Finish panels are not necessary. All cabinets are constructed with finished exteriors to match the doors.		

Undermount Sink



Rectangle White Porcelain
Bowl Dimensions: 18-1/2" L x 11-1/8" W x 5-1/2" D
HAH8910WH

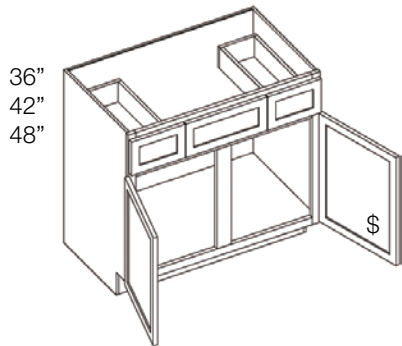
- Features:
- Mounting hardware included
 - Drain assembly not included
 - Overall Dimensions: 20-7/8" L x 13-3/8" W x 6-7/8" D
 - Rear drain location increases available space under sink
 - Equipped with overflow
 - UPC Certified
 - Limited Lifetime Warranty

How To Create Your Custom Vanity

1. Choose your door style and color, note your two-letter color code.

													
SHAKER					BROOKLYN					OSLO		ESSENTIAL	
SW *	SK	SS	SE	SM	BW	BG	BS	BF	BM	OW	OO	EW	EG
Designer White	Kodiak	Sand	Espresso	Moss	Bright White	Modern Gray	Slate	Fawn	Midnight Navy	White	Oak	White	Gray

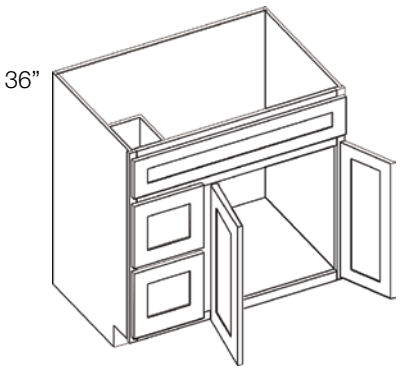
2. Choose your products from the options on the following pages.
- Each item priced as shown.
 - * Shaker Designer White (SW) cabinet boxes require “-5PC” at the end of each sku where noted.
 - Base Cabinets are 21” deep and 34.5” high standard. Custom depths are available with an upcharge.
 - Pantry Cabinets are 24” deep standard. Custom depths are available with an upcharge.
 - Wall Towers are 15” deep.
 - Touch-up kits are available.



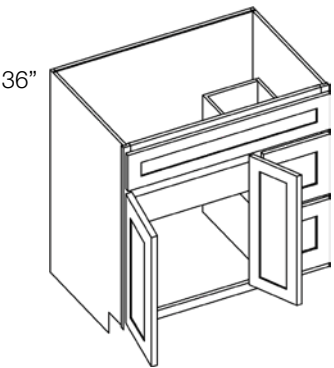
Vanity Sink Base

SINK BASE	SW *	SK	SS	SE	SM	BW	BG	BS	BF	BM	OW	OO	EW	EG
KC __ -VSB36 36" W x 34.5" H	\$836.23	\$832.50	\$808.02	\$793.72	\$827.59	\$891.23	\$859.42	\$808.02	\$945.10	\$594.84				
KC __ -VSB42 42" W x 34.5" H	\$912.69	\$913.40	\$886.29	\$870.45	\$907.96	\$978.43	\$943.21	\$886.29	\$1,038.08	\$650.23				
KC __ -VSB48 48" W x 34.5" H	\$1,005.20	\$1,011.26	\$980.98	\$963.28	\$1,005.22	\$1,083.96	\$1,044.59	\$980.98	\$1,150.57	\$717.26				

Standard depth is 21". Custom depths, as shallow as 18", are available for an additional \$145.00.
* Shaker Designer White requires “-5PC” at the end of each SKU.



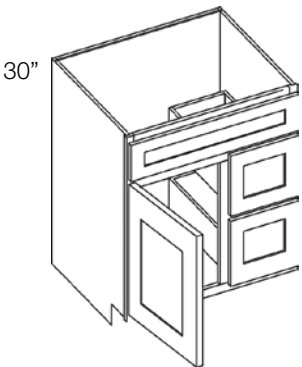
Sink Base with Left Drawers



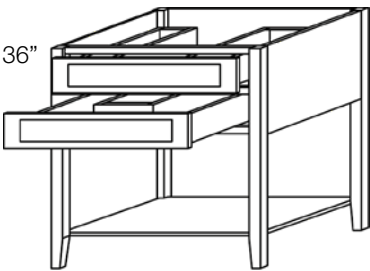
Sink Base with Right Drawers

BASE W/ DRAWERS	SW *	SK	SS	SE	SM	BW	BG	BS	BF	BM	OW	OO	EW	EG
KC __ -VBDL36 36" W x 34.5" H (Left Drawers)	\$927.15	\$925.83	\$899.19	\$891.34	\$920.49	\$920.49		\$989.75	\$955.14	\$899.19	\$1,057.68		N/A	
KC __ -VSDR36 36" W x 34.5" H (Right Drawers)	\$927.15	\$925.83	\$899.19	\$891.34	\$920.49	\$920.49		\$989.75	\$955.14	\$899.19	\$1,057.68		N/A	

Standard depth is 21". Custom depths, as shallow as 18", are available for an additional \$145.00.
* Shaker Designer White requires “-5PC” at the end of each SKU.



Sink Base with Left or Right Drawers



Sink Base with Open Shelf

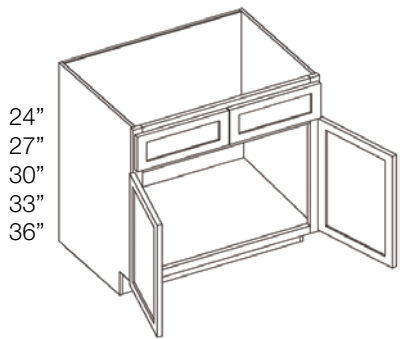
BASE W/ DRAWERS	SW *	SK	SS	SE	SM	BW	BG	BS	BF	BM	OW	OO	EW	EG
KC __ -VBDL30 30" W x 34.5" H (Left Drawers)	\$808.29	\$800.08	\$777.53	\$770.88	\$795.55	\$854.17	\$824.86	\$777.53	\$903.80	N/A				
KC __ -VSDR30 30" W x 34.5" H (Right Drawers)	\$808.29	\$800.08	\$777.53	\$770.88	\$795.55	\$854.17	\$824.86	\$777.53	\$903.80	N/A				

Standard depth is 21". Custom depths, as shallow as 18", are available for an additional \$145.00.
* Shaker Designer White requires “-5PC” at the end of each SKU.

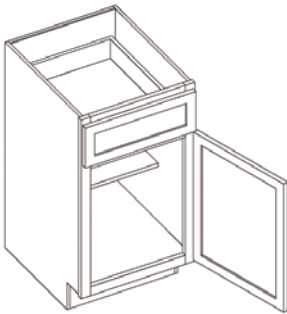
OPEN SHELF BASE	SW	SK	SS	SE	SM	BW	BG	BS	BF	BM	OW	OO	EW	EG
KC __ -VSBOS36 36" W x 34.5" H	\$1,208.01	\$1,257.58	\$1,222.19	\$1,211.74	\$1,250.51	\$1,342.52	\$1,296.52	\$1,222.19	\$1,420.39	N/A				

Standard depth is 21". Custom depths not available.

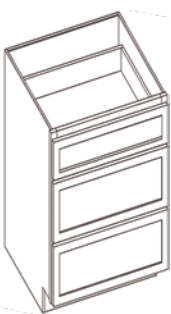




Double Door Vanity



Single Door Vanity



Vanity Drawer Base

DOUBLE DOOR	SW *	SK	SS	SE	SM	BW	BG	BS	BF	BM	OW	OO	EW	EG
KC __ -V24-2 24" W x 34.5" H	\$468.21	\$462.23	\$449.77	\$446.09	\$459.73	\$459.73	\$492.13	\$492.13	\$475.93	\$449.77	\$519.55	\$341.26		
KC __ -V27 27" W x 34.5" H	\$528.78	\$526.31	\$511.77	\$507.48	\$523.40		\$561.21	\$542.30	\$511.77	\$593.20	\$385.14			
KC __ -V30 30" W x 34.5" H	\$548.30	\$542.33	\$527.27	\$522.83	\$539.31	\$539.31	\$578.48	\$578.48	\$558.90	\$527.27	\$611.61	\$396.11		
KC __ -V33 33" W x 34.5" H	\$591.86	\$588.00	\$571.46	\$566.58	\$584.70		\$627.69	\$606.18	\$571.46	\$664.07	\$427.37			
KC __ -V36 36" W x 34.5" H	\$621.69	\$619.23	\$601.68	\$596.50	\$615.72		\$661.37	\$638.56	\$601.68	\$699.99	\$452.47			

Standard depth is 21". Custom depths, as shallow as 12", are available for an additional \$145.00.

* Shaker Designer White requires "-5PC" at the end of each SKU.

SINGLE DOOR	SW *	SK	SS	SE	SM	BW	BG	BS	BF	BM	OW	OO	EW	EG
KC __ -VB12 12" W x 34.5" H	\$441.69	\$447.82	\$432.29			\$445.43		\$476.58		\$461.00	\$432.29	\$502.95	N/A	
KC __ -VB15 15" W x 34.5" H	\$472.74	\$605.67	\$467.61	\$463.76	\$478.04	\$511.98		\$495.02	\$467.61	\$540.72	\$353.88			
KC __ -VB18 18" W x 34.5" H	\$502.25	\$511.90	\$497.83	\$493.68	\$509.09	\$545.66		\$527.37	\$497.83	\$576.61	\$375.25			

Standard depth is 21". Custom depths, as shallow as 18", are available for an additional \$130.00.

Single Door Vanities have a Left or Right door hinge option. Please add a "-L" or "-R" at the end of the sku to note which ordered.

* Shaker Designer White requires "-5PC" at the end of each SKU.

DRAWER BASE	SW *	SK	SS	SE	SM	BW	BG	BS	BF	BM	OW	OO	EW	EG
KC __ -VDB12 12" W x 34.5" H	\$707.61	\$693.53	\$674.44	\$668.80	\$689.70	\$689.70	\$739.35	\$739.35	\$714.54	\$674.44	\$781.35	\$508.15		
KC __ -VDB15 15" W x 34.5" H	\$753.03	\$741.59	\$720.94	\$714.85	\$737.45	\$737.45	\$791.16	\$764.32	\$720.94	\$836.59	\$541.06			
KC __ -VDB18 18" W x 34.5" H	\$799.20	\$790.46	\$768.22	\$761.66	\$786.01	\$786.01	\$843.82	\$843.82	\$814.93	\$768.22	\$892.74	\$574.53		
KC __ -VDB21 21" W x 34.5" H	N/A					N/A					N/A		\$635.71	
KC __ -VDB24 24" W x 34.5" H	\$903.67	\$900.99	\$875.16	\$867.54	\$895.84	\$962.99		\$929.41	\$875.16	\$1,028.84	\$692.23			

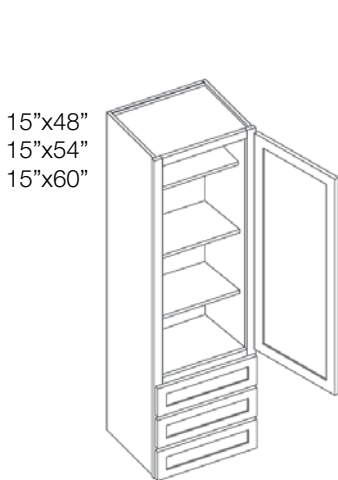
Standard depth is 21". Custom depths, as shallow as 18", are available for an additional \$160.00.

* Shaker Designer White requires "-5PC" at the end of each SKU.

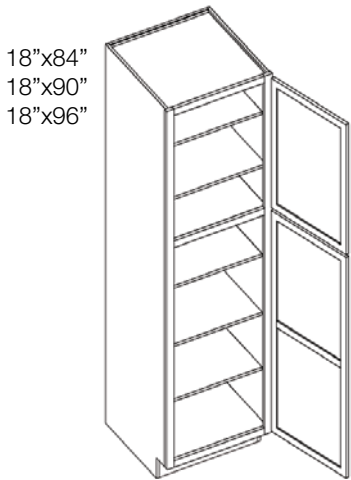


For your convenience, products with prices shown in a green box are stocked in our Central Service Center.

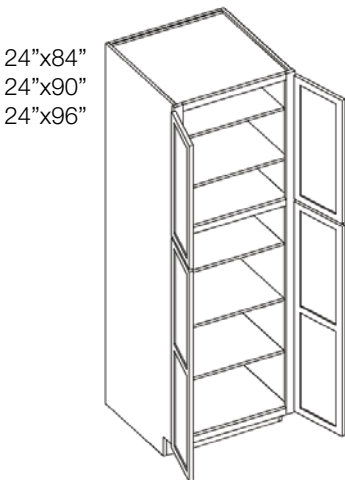
Orders placed before noon are available within 1 business day.



Wall Tower with 3 Drawers



Single Door Pantry



Double Door Pantry

WALL TOWER	SW *	SK	SS	SE	SM	BW	BG	BS	BF	BM	OW	OO	EW	EG
KC __ -DWR1548 15" W x 48" H	\$854.46	\$848.92	\$824.79		\$817.67	\$844.11		\$906.87		\$875.48	\$824.79	\$959.95	N/A	
KC __ -DWR1554 15" W x 54" H	\$893.09	\$889.78	\$864.32		\$856.81	\$884.68		\$950.90		\$917.79	\$864.32	\$1,015.84	N/A	
KC __ -DWR1560 15" W x 60" H	\$955.14	\$955.47	\$927.88		\$919.74	\$949.96		\$1,030.76		\$985.85	\$927.88	\$1,092.06	N/A	

Standard depth is 15". Custom depths not available.

Wall Towers have a Left or Right door hinge option. Please add a "-L" or "-R" at the end of the sku to note which ordered.

* Shaker Designer White requires "-5PC" at the end of each SKU.

SINGLE DOOR PANTRY	SW	SK	SS	SE	SM	BW	BG	BS	BF	BM	OW	OO	EW	EG
KC __ -P1884 18" W x 84" H (Includes 4 sheves)	\$1,104.01	\$1,151.55	\$1,117.59		\$1,097.75	\$1,144.78		\$1,233.08		\$1,188.93	\$1,117.59	\$1,307.78	\$821.85	
KC __ -P1890 18" W x 90" H (Includes 4 sheves)	\$1,182.78	\$1,234.08	\$1,197.44		\$1,176.03	\$1,226.75		\$1,322.01		\$1,274.39	\$1,197.44	\$1,402.62	\$878.36	
KC __ -P1896 18" W x 96" H (Includes 5 sheves)	\$1,226.80	\$1,280.20	\$1,242.06		\$1,219.78	\$1,272.56		\$1,219.78		\$1,322.14	\$1,242.06	\$1,455.62	\$909.93	

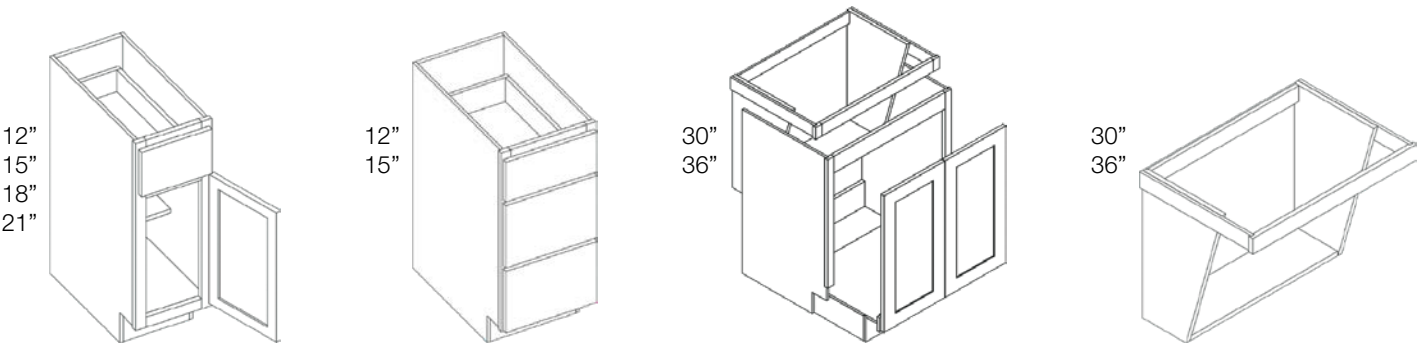
Standard depth is 24". Custom depths, as shallow as 12", are available for an additional \$115.00.

Single Door Pantries have a Left or Right door hinge option. Please add a "-L" or "-R" at the end of the sku to note which ordered.

DOUBLE DOOR PANTRY	SW	SK	SS	SE	SM	BW	BG	BS	BF	BM	OW	OO	EW	EG
KC __ -P2484 24" W x 84" H (Includes 4 sheves)	\$1,341.84	\$1,400.73	\$1,358.68		\$1,334.11	\$1,392.32		\$1,501.64		\$1,446.98	\$1,358.68	\$1,594.14	N/A	
KC __ -P2490 24" W x 90" H (Includes 4 sheves)	\$1,382.79	\$1,443.59	\$1,400.15		\$1,374.77	\$1,434.90		\$1,547.86		\$1,491.40	\$1,400.15	\$1,643.44	N/A	
KC __ -P2496 24" W x 96" H (Includes 5 sheves)	\$1,479.31	\$1,544.71	\$1,497.99		\$1,470.69	\$1,535.36		\$1,656.86		\$1,596.11	\$1,497.99	\$1,759.67	N/A	

Standard depth is 24". Custom depths, as shallow as 12", are available for an additional \$115.00.

ADA Compatible Base Cabinets



Single Door Base

Drawer/Vanity Base

Sink Base

Vanity Drawer Base

SINGLE DOOR BASE †	SW *	EW
KC __ -B12-RH 12" W x 32.5" H	\$467.44	\$350.05
KC __ -B15-RH 15" W x 32.5" H	\$501.51	\$374.71
KC __ -B18-RH 18" W x 32.5" H	\$533.31	\$397.76
KC __ -B21-RH 21" W x 32.5" H	\$568.89	\$423.54

* Shaker Designer White requires "-5PC" at the end of each SKU.
† The Single Door Base has a Left or Right door hinge option. Please add a "-L" or "-R" at the end of the sku to note which ordered. For Shaker Designer White, add a "-L" or "-R" after "-5PC"

SINK BASE	SW	EW
KC __ -SB30-ACC 30" W x 32.5" H	\$642.87	\$610.82
KC __ -SB36-ACC 36" W x 32.5" H	\$652.87	\$625.91

The sink base has a removeable, non-operating door front.

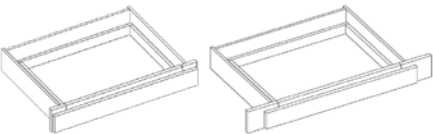
DRAWER/VANITY BASE	SW *	EW
KC __ -DB12-3-RH 12" W x 32.5" H	\$718.19	\$515.82
KC __ -DB15-3-RH 15" W x 32.5" H	\$778.01	\$559.16
KC __ -VDB12-RH 12" W x 32.5" H	\$708.36	\$508.72
KC __ -VDB15-RH 15" W x 32.5" H	\$753.78	\$541.63

VANITY DRAWER BASE	SW	EW
KC __ -V30-ACC 30" W x 32.5" H	\$257.96	\$218.95
KC __ -V36-ACC 36" W x 32.5" H	\$280.68	\$238.14



ADA Compatible

To comply with the Americans with Disability Act (ADA) guidelines, our ADA cabinets are specifically engineered with a height of 32.5". Our ADA cabinets make it easy to design a beautiful space to support everyone who lives in your home.

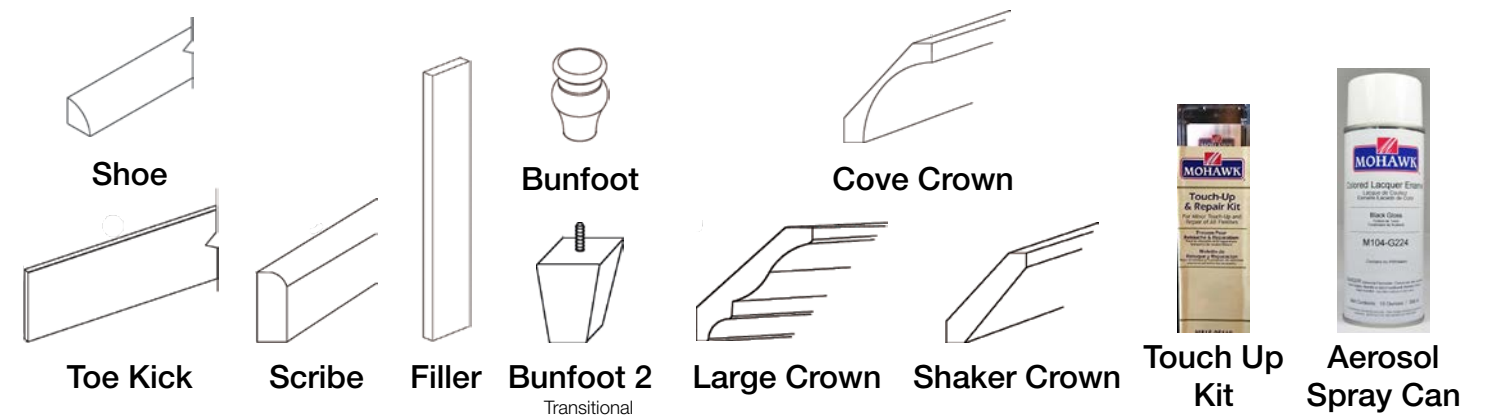


Vanity Drawers

DRAWERS	SW	SK	SS	SE	SM	BW	BG	BS	BF	BM	OW	OO	EW	EG
KC __ -KD24 23.5" W x 4.75" H	\$259.23	\$269.01	\$262.03			\$267.62		\$288.06		\$279.91	\$262.03	\$303.56	N/A	
KC __ -KD36 29.5" to 36" W x 4.75" H	\$325.52	\$338.44	\$329.21		\$326.48	\$336.59		\$360.60		\$348.60	\$329.21	\$380.91	N/A	

Standard depth is 21". Upcharge for custom depth – Please see Sales Associate for pricing.






ACCESSORIES	SW	SK	SS	SE	SM	BW	BG	BS	BF	BM	OW	OO	EW	EG
KC __ -TKS8 96" W x 4.5" H x 0.25" D Toe Kick	\$23.46	\$24.59		\$23.79		\$24.44	\$24.44	\$26.50	\$26.50	\$25.47	\$23.79	\$28.25	\$23.59	
KC __ -SHOE 96" W x 0.6875" H x 0.6875" D Shoe Molding	\$28.02	\$29.36		\$28.40		\$29.15		\$31.62		\$30.39	\$28.40	\$33.73	\$27.96	
KC __ -SCRIBE 96" W x 0.625" H x 0.25" D Scribe Molding	\$29.54	\$30.93		\$29.92		\$30.72		\$33.35		\$32.03	\$29.92	\$35.56	\$29.61	
KC __ -F396 3" W x 96" H x 0.75" D Filler	\$72.67	\$76.14		\$73.67		\$75.65	\$75.65	\$82.07	\$82.07	\$78.85	\$73.67	\$87.50	\$73.49	
KC __ -F696 6" W x 96" H x 0.75" D Filler	\$145.36	\$152.29		\$147.34		\$151.28		\$164.13		\$157.72	\$147.34	\$175.02	\$147.55	
KC __ -TBUNFOOT 3" W x 4.5" H x 3" D Bunfoot	\$108.25	\$113.40		\$109.72		\$112.68		\$122.26		\$117.47	N/A		\$109.70	
KC __ -TBUNFOOT2 3.5" W x 4.5" H x 3.5" D Bunfoot 2	\$108.25	\$113.40		\$109.72		\$112.68		\$122.26		\$117.47	\$109.72	\$130.35	\$109.70	
KC __ -COM8 96" W x 3.25" H x 2.75" D Cove Crown Molding	\$193.05	\$202.24		\$195.67		\$200.43		\$218.00		\$209.48	\$195.67	\$232.45	\$154.11	
KC __ -BCM8 96" W x 3.25" H x 2.625" D Large Crown Molding	N/A					\$193.05		\$209.45		\$201.26	N/A		\$188.13	
KC __ -SCM8 96" W x 3.125" H x 2 D Shaker Crown Molding	\$90.85	\$95.17		\$92.08		\$94.55		N/A		\$98.57	\$92.08	\$109.39	\$92.13	

TOUCH UPS	SW	SK	SS	SE	SW	BW	BG	BS	BF	BM	OW	OO	EW	EG
KC __ -SPRAYCAN Aerosol Spray Can				\$54.08		\$54.08		\$54.08			\$54.08		\$54.08	
KC __ -TUKIT Touch Up Kit				\$41.20		\$41.20	\$41.20	\$41.20	\$41.20		\$41.20		\$41.20	


 For your convenience, products with prices shown in a green box are stocked in our Central Service Center. Orders placed before noon are available within 1 business day.

Accessorize With QuickSHIP Hardware






Ascendra 1-1/4" Knob
Polished Chrome
TOTK702PC



Ascendra 1-1/4" Knob
Brushed Satin Nickel
TOTK702BSN



Ascendra 1-1/4" Knob
Honey Bronze
TOTK702HB



Ascendra 1-1/4" Knob
Black
TOTK702BLK




Ascendra 5-11/16" Pull Polished Chrome
TOTK704PC



Ascendra 5-11/16" Pull Honey Bronze
TOTK704HB




Ascendra 5-11/16" Pull Brushed Satin Nickel
TOTK704BSN




Ascendra 5-11/16" Pull Black
TOTK704BLK



Kinney 1-1/4" Knob
Polished Chrome
TOTK901PC




Kinney 1-1/4" Knob
Brushed Satin Nickel
TOTK901BSN



Kinney 1-1/4" Knob
Honey Bronze
TOTK901HB




Kinney 1-1/4" Knob
Flat Black
TOTK901BLK



Kinney 4-3/16" Pull Polished Chrome
TOTK941PC




Kinney 4-3/16" Pull Honey Bronze
TOTK941HB




Kinney 5-1/16" Pull Polished Chrome
TOTK942PC



Kinney 5-1/16" Pull Honey Bronze
TOTK942HB



Kinney 4-3/16" Pull Brushed Satin Nickel
TOTK941BSN



Kinney 5-1/16" Pull Brushed Satin Nickel
TOTK942BSN



Kinney 4-3/16" Pull Flat Black
TOTK941BLK



Kinney 5-1/16" Pull Flat Black
TOTK942BLK



Tipout Tray for Sink Front

- Convert false front drawers into useful hidden storage space
- Sold as individual tray
- Available in White polymer and Stainless Steel varieties
- Chrome Hinges sold separately - HATIPOUT-HINGE (\$9.26 per set)



Part Number (White)	Price	Size
HATO11S-REPL	\$5.00	11-11/16" W x 1-9/16" D
HATO11-REPL	\$8.00	11-11/16" W x 2" D
HATO14S-REPL	\$6.18	14-13/16" W x 1-9/16" D
HATO14-REPL	\$9.08	14-13/16" W x 2" D

Part Number (Stainless Steel)	Price	Size
HATOSS11S-REPL	\$20.68	11-11/16" W x 1-9/16" D
HATOSS11-REPL	\$21.48	11-11/16" W x 2" D
HATOSS14S-REPL	\$22.24	14-13/16" W x 1-9/16" D
HATOSS14-REPL	\$22.88	14-13/16" W x 2" D



Powered Pullout for Door/Drawer Base Cabinet

- Built-in power outlets with side-by-side outlet arrangement allows oversize plugs to be used simultaneously
- Unit plugs into standard wall outlet in back of cabinet or adjacent cabinet
- Power automatically shuts off when pullout is closed
- Built-in cord management system keeps the unit cord secure while in motion
- Built on patented "No Wiggle" platform that eliminates excessive movement
- Designed to fit door/drawer base cabinet in frameless or face frame

Part Number	Size	Price	Compatible with
HAPVBPOD8-SC	8" W x 19-7/8" H x 19" D	\$533.58	VB12
HAPVBPOD11-SC	11" W x 19-7/8" H x 19" D	\$594.28	VB15



Powered Vanity Drawer

- Easy plug and play installation
- 8 ft power cord with NEMA 5-15 right angle plug
- Automatic power shutoff when drawer is closed
- Removable caddy tray and two Stainless steel canister storage bins
- Uses concealed synchronized undermount slides with 6 way adjustable clips

Part Number	Size	Price	Compatible with
HAPVGD15-SC	15" W x 9" H x 20" D	\$501.96	VDB18 (due to the height, this will only fit in the middle or bottom drawer)



Adjustable SLIMLINE™ Vanity Drop-In Drawer Insert

- 5" of adjustable width for a perfect fit in any drawer
- Dividers are 3/8" thick
- Trimmable depth of 2-3/4"

Part Number	Size	Price	Compatible with
HAVO12A	12" W x 2-3/8" H x 16-1/2" D	\$59.72	VB12, VB15, VDB12, VDB15
HAVO18A	18" W x 2-3/8" H x 16-1/2" D	\$80.12	VB18, VDB18, VDB21



35 Quart Trashcan Rollout for Hinged Doors

- Ships preassembled and quickly mounts to cabinet floor using four screws
- Designed for cabinets with 12" minimum opening width
- Features 300 series 100 lb. full extension soft-closing concealed undermount slides and 4-way adjustable slide clips
- UV coated edge banded birch plywood construction
- Includes one can

Part Number	Size	Price	Compatible with
HACAN-WBMS35VWH (White)	9-1/8" W x 19-13/16" H x 18-7/16" D	\$247.96	VB15
HACAN-WBMS35VG (Gray)			
HACAN-WBMS35VB (Black)			



High Back Rollout for Vanity Depth

- White birch dovetail boxes with UV coating built in
- Features 300 series concealed undermount soft-close slides
- 100 lb. weight capacity
- Ships preassembled and easily installs with four screws
- High-back drawers have an 8" high back and 3" high front
- Use multiple rollouts for wide cabinets

Part Number	Size	Price	Compatible with
HAROVHB12-WB	10-1/16" W x 9" H x 18-7/16" D	\$241.00	VB12
HAROVHB15-WB	13-1/16" W x 9" H x -7/16" D	\$245.56	VB15
HAROVHB18-WB	16-1/16" W x 9" H x -7/16" D	\$250.48	VB18



Pullout Cleaning Supply Caddy

- Mounts easily under your sink, left- or right-handed
- Quickly mounts to cabinet floor using four screws
- Plastic liner tray catches drips
- Full extension ball bearing slides
- Heavy duty wire construction with 25 lb. capacity
- Simply pick it up and take it with you
- Ergonomic plastic handle

Part Number	Size	Price	Compatible with
HASCPO2-R	11-5/8" W x 15-15/16" H x 19-11/16" D	\$113.24	VB15



Brooklyn Midnight Navy



Shaker White
Chadwick Faucets - Ascendra Pulls - Brixton Knobs



Brooklyn Slate Gray



Brooklyn Fawn



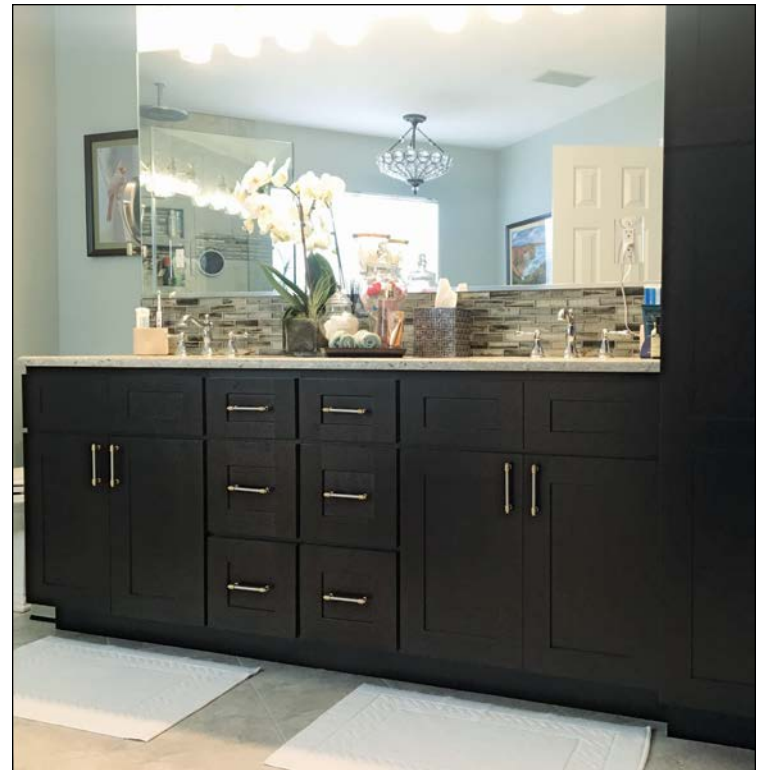
Shaker Moss



Shaker Kodiak Brown



Oslo White



Shaker Espresso

Vanity Cabinet Care

Kitchen Cabinet Distributors wants your cabinets to remain beautiful for years to come, so we've put together some basic maintenance tips to help you care for your new cabinets.

Cabinet Care Tips

- Wipe your cabinets with a clean, soft, lint-free cloth.
- Use warm water or a mild dishwashing liquid mixed with warm water.
- Ensure spills and splatters are wiped immediately to avoid staining. Prolonged exposure can create discoloration or damage to the finish.
- Always dry surfaces thoroughly once you are done cleaning.
- Wash and polish your cabinets once or twice a year using a coat of high quality, oil-based furniture polish. An emulsion-type clear polish is recommended. Do not use wax-based products as this causes buildup on the cabinet surface.
- Avoid exposure to high heat sources. To avoid damage, we recommend removing cabinet doors and drawers near self-cleaning ovens during cleaning cycles.
- For glass door fronts, use ammonia-free sprays and spray directly on cleaning cloth to avoid spraying cabinet.

What to Avoid

- Don't use harsh detergents, strong soaps, abrasive cleaning products, scouring powder/pads or other harsh abrasives.
- Don't use spray polishes containing silicone or petroleum solvents.
- Don't use products that contain ammonia.
- Don't use bleach or products containing bleach.
- Don't use a dishcloth or sponge to clean or dry cabinets. They may contain grease or particles that damage the finish.
- Don't mount or place heat-producing appliances beneath cabinets due to excess heat and moisture exposure. If you notice moisture buildup, wipe dry immediately.
- Don't use brass and silver polishes on hardware as they contain harsh chemicals that can damage the cabinet finish.

Vanity Cabinet Warranty & Compliancy

Kitchen Cabinet Distributors warrants that all of its products will be free from defects in workmanship and material for a period of five years from the date of shipment from our facility. This limited warranty applies only to the use of our products in normal residential use. Defects are defined as any imperfection that may prohibit the use of the cabinet in normal residential applications or which otherwise do not measure up to our quality standards. This warranty applies to the original owner and cannot be transferred to subsequent owners. Defects or damage caused by improper assembly or disassembly, intentional damage, misuse, product modifications, exposure to the elements, accident, or negligence on the part of persons other than Kitchen Cabinet Distributors is not covered by this limited warranty.

Kitchen Cabinet Distributors factories are ISO-14001 compliant, KCMA Certified, and meet the TSCA or CARB II emissions standards.

These vanities are **CARB2 Compliant**. What does this mean to you? That the California Air Resources Board has ensured these products meet strict environmental standards that have been certified by independent third party companies for low VOCs. This protects you from airborne toxic contaminants such as formaldehyde emissions. This allows Mosaic to proudly offer you products that are safe for your family.



Alexandria, VA | Chantilly, VA | Fairfax, VA | Richmond, VA | Virginia Beach, VA
North Bethesda, MD* | Owings Mills, MD* | Greensboro, NC | Raleigh, NC

www.mosaictileco.com



Noted (*) locations are 100% wind powered! All locations support renewable power sources.

